

# ZebraDesigner™ *for* *mySAP™ Business Suite v2*



## **“Plug and Print” Ease and Speed**

With Zebra’s ZebraDesigner™ *for mySAP™ Business Suite* label design software for use with the SAP® Business Suite family of business applications, you can easily design and modify label formats within a user-friendly graphical interface—and print directly from SAP’s mySAP™ Business Suite environment. This easy-to-use label design software makes it possible to print to your Zebra® printers from SAP® without the need for middleware or additional programming.

Once label designs are complete, they can be distributed to one or many printers—or stored on your PC for later uploading to mySAP Business Suite. As new labeling needs emerge, it’s “click” simple to create or edit existing designs.

## **Enhanced with New, Versatile, Simple Tools**

Easy-to-use label design tools and expanded RFID wizards make it simple to create complex labels—based on fixed or variable data. Controlling field content, overall label formatting and creating template files have all been enhanced.

The updated ZebraDesigner printer drivers place advanced printer diagnostic and configuration tools at your fingertips. Download fonts, graphics and firmware using an intuitive Windows® interface.

The new ZebraDesigner *for mySAP™ Business Suite* licensing system gives you control over product activation. Download a demo version to test drive the software—and then purchase an activation key from your Zebra reseller or at [www.zebrasoftware.com](http://www.zebrasoftware.com). Need to move a key from one PC to another? The License Manager guides you through the process.

Featuring an intuitive, Windows®-based interface and a WYSIWYG label designer, ZebraDesigner *for mySAP™ Business Suite* makes creating complex bar code label designs and format changes “click” simple.

ZebraDesigner *for mySAP™ Business Suite* supports the following user-interface languages:

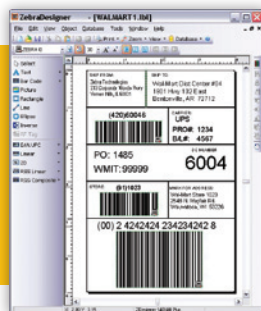
- Croatian
- Czech
- Danish
- Dutch
- English
- Finnish
- French
- German
- Greek
- Hebrew
- Hungarian
- Italian
- Japanese
- Korean
- Lithuanian
- Norwegian
- Polish
- Portuguese
- Russian
- Simplified Chinese
- Slovak
- Slovenian
- Spanish
- Swedish
- Thai
- Traditional Chinese
- Ukrainian



# ZebraDesigner™

Label Design Application  
for mySAP™ Business Suite

## DESIGN



With the help of the software's new design and RFID wizards, it's easy to create complex labels based on fixed or variable data.

## DEPLOY



The design distribution wizard makes it easy to send label templates to one or many printers with a single click. Formats can also be stored on the PC for uploading to mySAP Business Suite.

## PRINT



Once labels formats are in place, simply print directly from mySAP Business Suite. Variable fields are populated with data, and labels print!

- Supported Operating Systems: Windows 2000/XP/2003/2008/Vista/Windows 7
- Use ZebraNet™ Bridge Enterprise to enhance your printer management capabilities (free version included)

Specifications subject to change without notice. ©2010 ZIH Corp. ZebraDesigner and ZebraNet are Zebra trademarks, and Zebra and the Zebra head graphic are registered trademarks of ZIH Corp. All rights reserved. SAP and mySAP are trademarks or registered trademarks of SAP AG in Germany and several other countries. Windows and Windows Vista are either registered trademarks or trademarks of Microsoft Corporation in the United States and/or other countries. All other trademarks are the property of their respective owners.



www.zebra.com

**Corporate Headquarters**  
+1 800 423 0442  
E-mail: inquiry4@zebra.com

**Asia-Pacific Headquarters**  
+65 6858 0722  
E-mail: apacchannelmarketing@zebra.com

**EMEA Headquarters**  
+44 (0)1628 556000  
E-mail: mseurope@zebra.com

**Latin America Headquarters**  
+1 847 955 2283  
E-mail: inquiry4@zebra.com

### Locations

**USA:** California, Georgia, Illinois, Rhode Island, Texas, Wisconsin **Europe:** France, Germany, Italy, Netherlands, Poland, Spain, Sweden, United Kingdom  
**Asia Pacific:** Australia, China, India, Japan, Singapore, South Korea **Latin America:** Argentina, Brazil, Florida (USA), Mexico **Africa/Middle East:** Russia, South Africa, United Arab Emirates

GSA#: GS-35F-0268N  
P1022526 Rev. 2 (3/10)